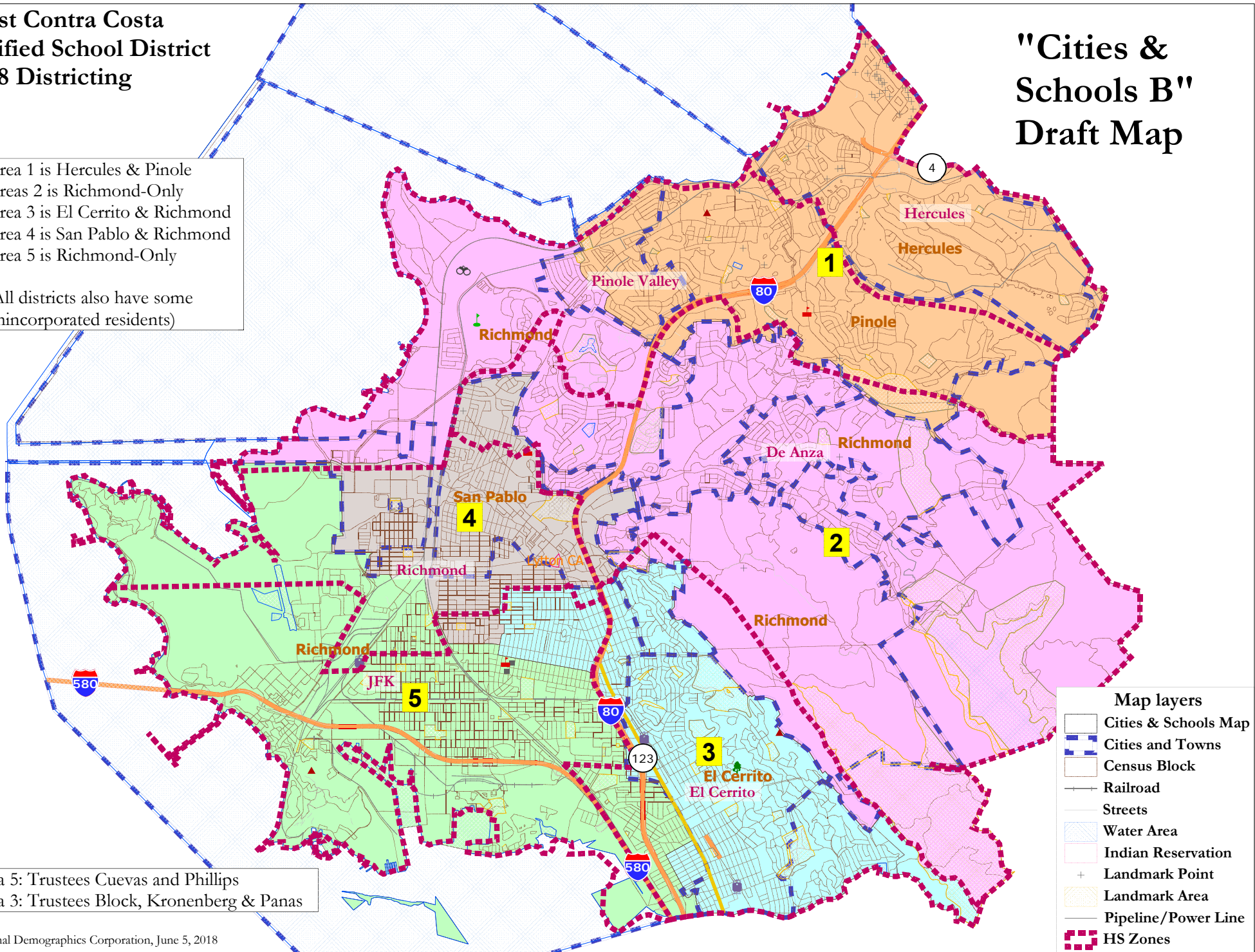


**West Contra Costa  
Unified School District  
2018 Districting**

**"Cities &  
Schools B"  
Draft Map**

Area 1 is Hercules & Pinole  
 Areas 2 is Richmond-Only  
 Area 3 is El Cerrito & Richmond  
 Area 4 is San Pablo & Richmond  
 Area 5 is Richmond-Only

(All districts also have some unincorporated residents)



Area 5: Trustees Cuevas and Phillips  
 Area 3: Trustees Block, Kronenberg & Panas

## WCCUSD - Cities & Schools B

District		1	2	3	4	5	Total
Ideal	Total Pop	47,275	48,037	46,299	45,837	48,399	235,847
47,169	Deviation from ideal	106	868	-870	-1,332	1,230	2,562
	% Deviation	0.22%	1.84%	-1.84%	-2.82%	2.61%	5.43%
Total Pop	% Hisp	20%	27%	19%	60%	41%	34%
	% NH White	27%	25%	46%	8%	15%	24%
	% NH Black	16%	22%	10%	16%	33%	19%
	% Asian-American	34%	22%	23%	12%	8%	20%
Citizen Voting Age Pop	Total	35,775	33,564	34,195	21,863	27,374	152,771
	% Hisp	18%	22%	12%	42%	22%	22%
	% NH White	30%	30%	55%	14%	24%	32%
	% NH Black	14%	22%	10%	21%	40%	21%
	% Asian/Pac.Isl.	35%	23%	22%	20%	12%	23%
Voter Registration (Nov 2016)	Total	27,257	25,364	30,430	16,379	24,564	123,994
	% Latino est.	25%	23%	13%	47%	22%	24%
	% Spanish-Surnamed	22%	20%	12%	42%	20%	21%
	% Asian-Surnamed	10%	8%	9%	5%	4%	7%
	% Filipino-Surnamed	6%	3%	1%	2%	1%	3%
	% NH White est.	43%	44%	68%	27%	29%	44%
	% NH Black	21%	30%	12%	35%	48%	28%
Voter Turnout (Nov 2016)	Total	20,353	18,479	24,720	9,813	15,871	89,234
	% Latino est.	24%	22%	12%	48%	21%	22%
	% Spanish-Surnamed	22%	20%	11%	43%	19%	20%
	% Asian-Surnamed	10%	8%	10%	5%	4%	8%
	% Filipino-Surnamed	5%	2%	1%	2%	1%	3%
	% NH White est.	43%	45%	68%	27%	33%	47%
	% NH Black	21%	29%	11%	34%	43%	25%
Voter Turnout (Nov 2014)	Total	10,951	10,030	15,876	4,345	9,138	50,340
	% Latino est.	18%	15%	9%	36%	13%	15%
	% Spanish-Surnamed	16%	14%	8%	32%	12%	14%
	% Asian-Surnamed	9%	7%	9%	5%	4%	7%
	% Filipino-Surnamed	4%	2%	1%	3%	1%	2%
	% NH White est.	49%	45%	72%	24%	39%	51%
	% NH Black est.	20%	30%	10%	31%	42%	24%
ACS Pop. Est.	Total	48,674	49,321	48,500	48,166	50,900	245,562
Age	age0-19	21%	21%	20%	30%	27%	24%
	age20-60	56%	57%	55%	56%	57%	56%
	age60plus	23%	22%	25%	14%	15%	20%
Immigration	immigrants	30%	31%	28%	44%	33%	33%
	naturalized	71%	58%	53%	36%	29%	48%
Language spoken at home	english	58%	54%	62%	28%	49%	50%
	spanish	14%	23%	15%	55%	39%	29%
	asian-lang	21%	14%	13%	12%	8%	14%
	other lang	8%	8%	10%	5%	4%	7%
Language Fluency	Speaks Eng. "Less than Very Well"	16%	20%	17%	38%	25%	23%
Education (among those age 25+)	hs-grad	54%	57%	37%	51%	50%	50%
	bachelor	24%	20%	28%	9%	15%	20%
	graduatedegree	11%	9%	26%	3%	9%	12%
Child in Household	child-under18	29%	27%	25%	40%	31%	30%
Pct of Pop. Age 16+	employed	61%	59%	62%	57%	58%	60%
Household Income	income 0-25k	11%	14%	13%	26%	26%	18%
	income 25-50k	16%	20%	17%	27%	26%	21%
	income 50-75k	17%	18%	16%	21%	19%	18%
	income 75-200k	47%	41%	42%	24%	26%	37%
	income 200k-plus	9%	7%	12%	1%	4%	7%
Housing Stats	single family	82%	73%	78%	67%	58%	72%
	multi-family	18%	27%	22%	33%	42%	28%
	rented	26%	41%	37%	57%	59%	44%
	owned	74%	59%	63%	43%	41%	56%
Total population data from the 2010 Decennial Census.							
Surname-based Voter Registration and Turnout data from the California Statewide Database.							
Latino voter registration and turnout data are Spanish-surname counts adjusted using Census Population Department undercount estimates. NH White and NH Black registration and turnout counts estimated by NDC. Citizen Voting Age Pop., Age, Immigration, and other demographics from the 2012-2016 American Community Survey and Special Tabulation 5-year data.							